

**BICYCLE PEDESTRIAN MASTER PLAN UPDATE
INTERACTIVE MAP
USER GUIDE**

PREPARED FOR:



THE COLLIER COUNTY METROPOLITAN PLANNING ORGANIZATION

PREPARED BY:



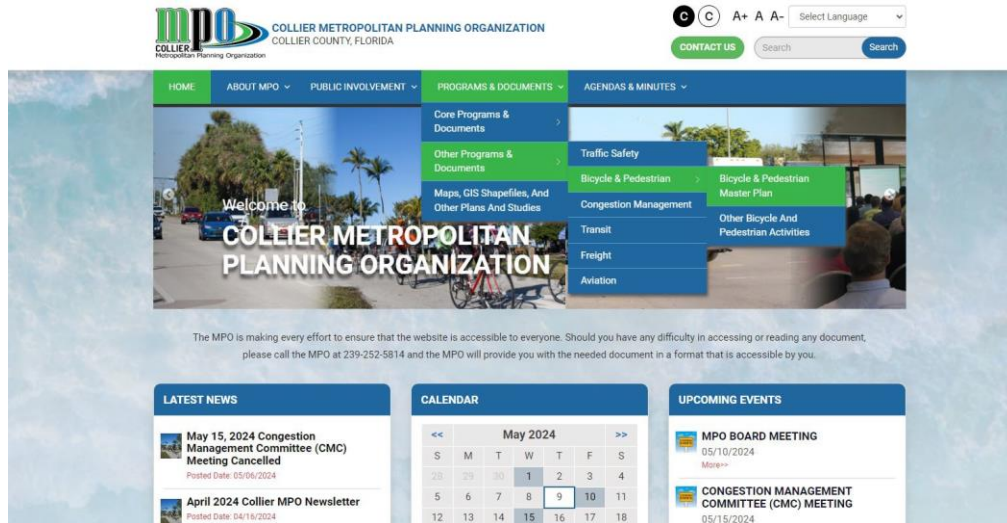
CAPITAL CONSULTING SOLUTIONS, LLC

ACCESS INTERACTIVE MAP:

1. Go to www.colliermpo.org, click on the on the homepage.



2. Navigate to “Program & Documents” → “Other Program & Documents” →”Bicycle & Pedestrian” → “Bicycle & Pedestrian Master Plan”.



3. On the “Bicycle Pedestrian Master Plan” homepage you will find two links below that will direct you to the BPMP Interactive Map and the Interactive Map User Guide as seen on the next page.

COLLIER METROPOLITAN PLANNING ORGANIZATION
COLLIER COUNTY, FLORIDA

HOME ABOUT MPO PUBLIC INVOLVEMENT PROGRAMS & DOCUMENTS AGENDAS & MINUTES

Home / BICYCLE & PEDESTRIAN MASTER PLAN

BICYCLE & PEDESTRIAN MASTER PLAN

2024 COLLIER MPO BICYCLE & PEDESTRIAN MASTER PLAN UPDATE

The MPO is in the process of updating the 2019 Bicycle and Pedestrian Master Plan with assistance from Capital Engineering Solutions and guidance from the MPO's Bicycle and Pedestrian Advisory Committee, Citizen and Technical Advisory Committees, our agency planning partners, local advocacy groups and public input.

The initial phase involves gathering information and creating an inventory of bike-ped facilities within the MPO's jurisdiction that are:

- Existing – currently in place or construction will be complete by the end of 2024
- Programmed – facilities that are programmed for construction between 2025-2029 in the MPO's Transportation Improvement Program, Collier County's Capital Improvement Program or the Cities of Marco Island and Naples Capital Improvement Programs.
- Planned – facilities identified in the Everglades City, Marco Island or Naples Bike-Ped Master Plan, an MPO or County Feasibility Study, Walkable Community Study, Community Redevelopment Agency Master Plan or other locally adopted plan or study, in a Project Development and Environment Study or in the Preliminary Engineering (Design) phase.

The MPO is seeking public input to improve the accuracy of the current facility inventories mapped thus far, and comments regarding where new or improved facilities should be considered for prioritization. A preliminary test version of the interactive map showing existing, planned and programmed bike-ped facilities within the MPO's jurisdiction can be accessed at the following link:

[Collier MPO BPMP Interactive Map](#)

[BPMP Update – Interactive Map User Guide](#)

If you have any questions regarding the Interactive Map and User Guide, the 2024 BPMP Update or the 2019 Plan, contact Anne McLaughlin, MPO Director, at 239-252-5884 or send an email to: anne.mclaughlin@colliercountyfl.gov

USER INTERFACE:

4. You should see an aerial of Collier County as seen in the picture below:

Note*: Aerial will not always look the same as the picture below.

Collier County MPO Bi...
Anthony Arthur

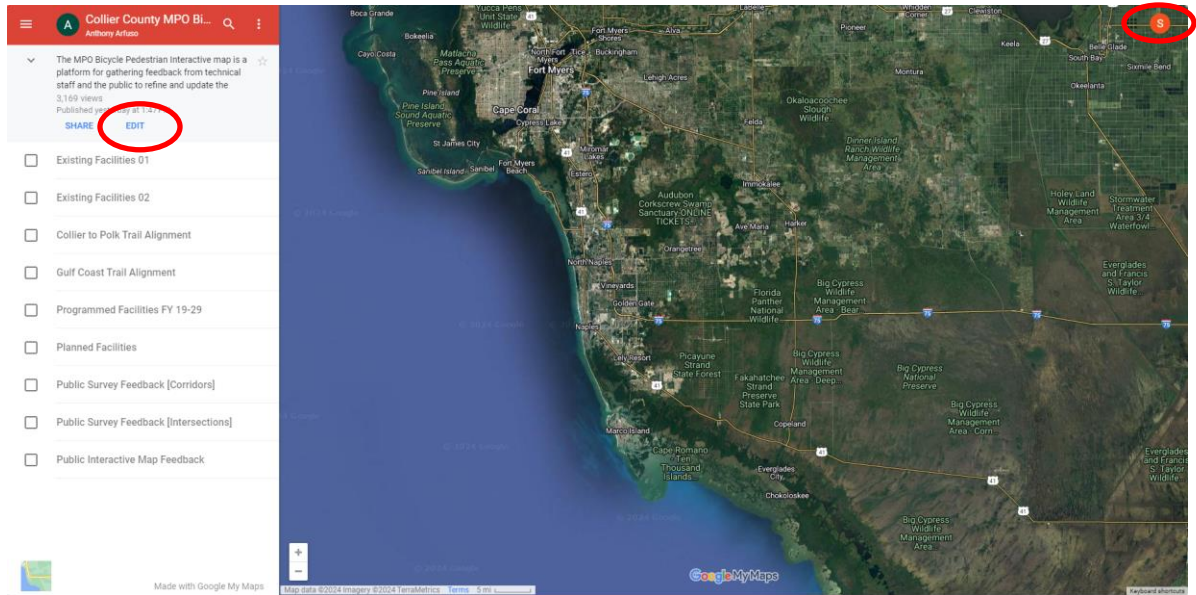
This map was created by a user. Learn how to create your own.

The MPO Bicycle Pedestrian Interactive map is a platform for gathering feedback from technical staff and the public to refine and update the 3,168 views
Published yesterday at 1:47 PM
SHARE

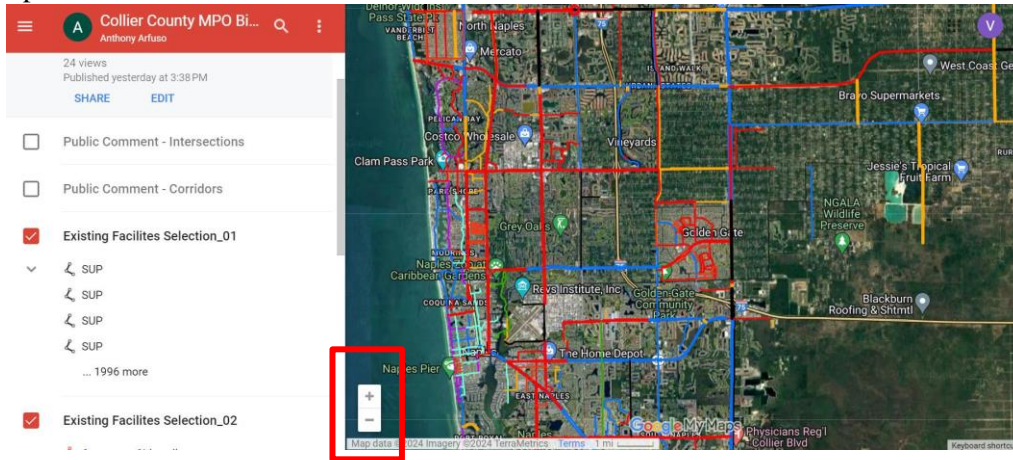
- Existing Facilities 01
- Existing Facilities 02
- Collier to Polk Trail Alignment
- Gulf Coast Trail Alignment
- Programmed Facilities FY 19-29
- Planned Facilities
- Public Survey Feedback [Corridors]
- Public Survey Feedback [Intersections]
- Public Interactive Map Feedback

Made with Google My Maps

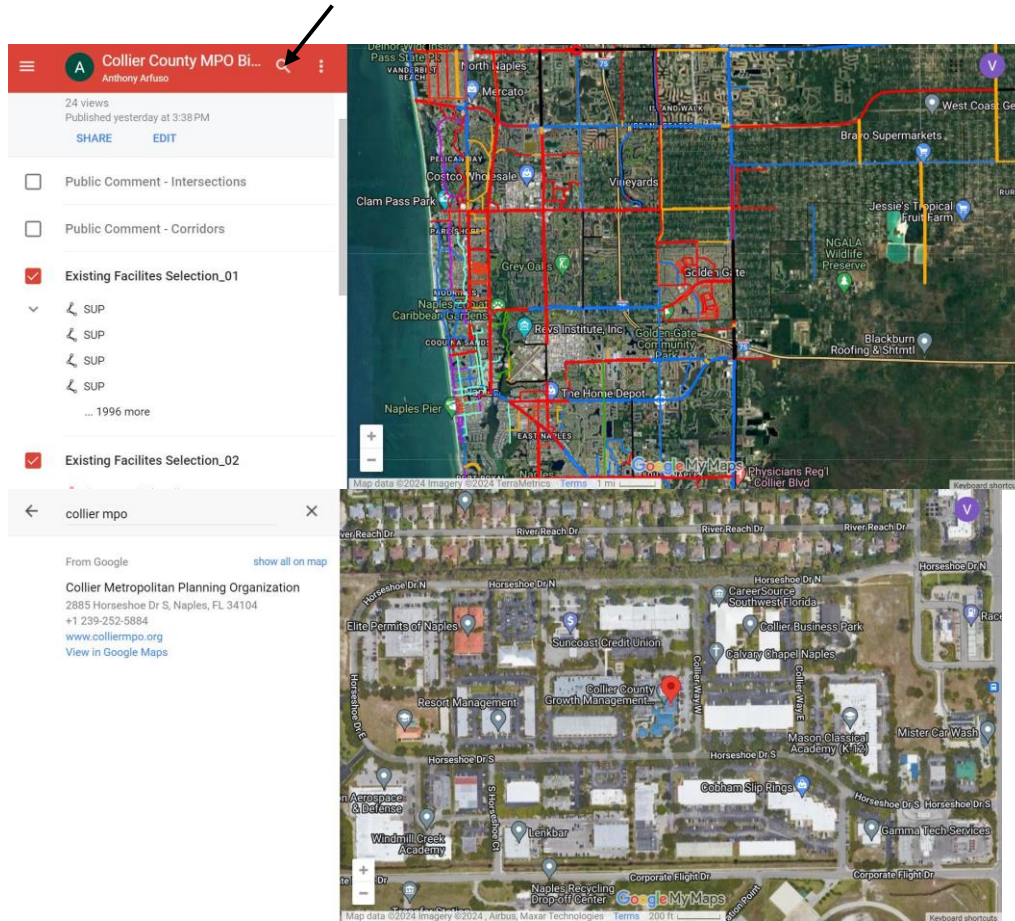
5. Sign in to Google in the top right corner to be able to edit the map. Once signed in, the “EDIT” function should appear in the left toolbar.



6. To zoom in or out on the map, use the “+” and “-“ buttons located in the bottom left corner of the map. You can also use the mouse wheel to zoom in and out.

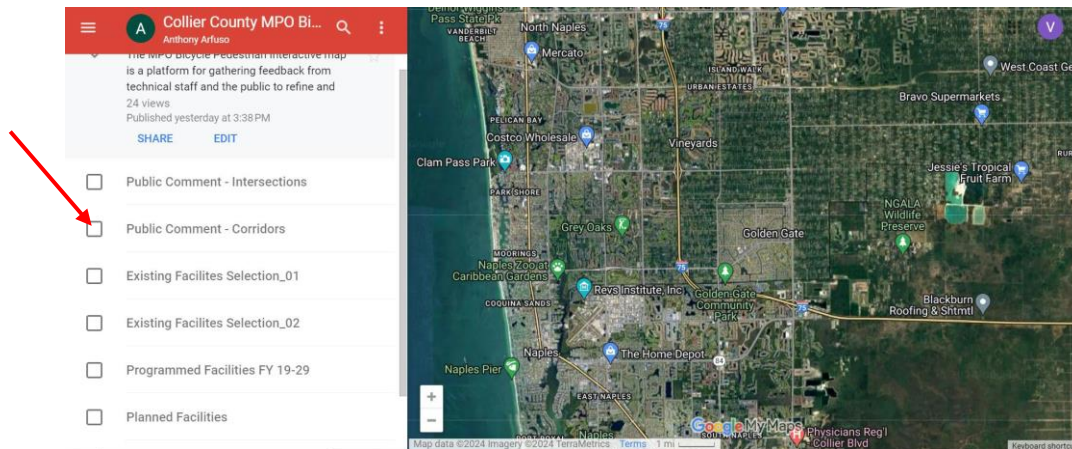


7. By using the magnifying glass icon at the top left bar, you can search for specific locations and/or point of interest.



- To turn on or off layers on the map, there is an interactive bar located on the left. Click on the small square next to the layer of interest to toggle on/off. (Aerial below has all layers turned off).

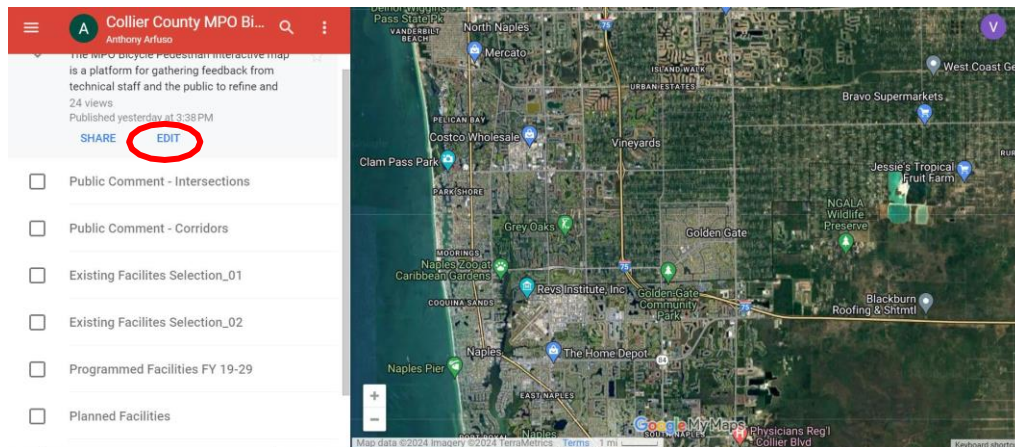
Note*: For best experience of existing facilities in Collier County, turn on both “Existing Facilities Selection 01” and "Existing Facilities Selection 02” layers to enable a complete network view.



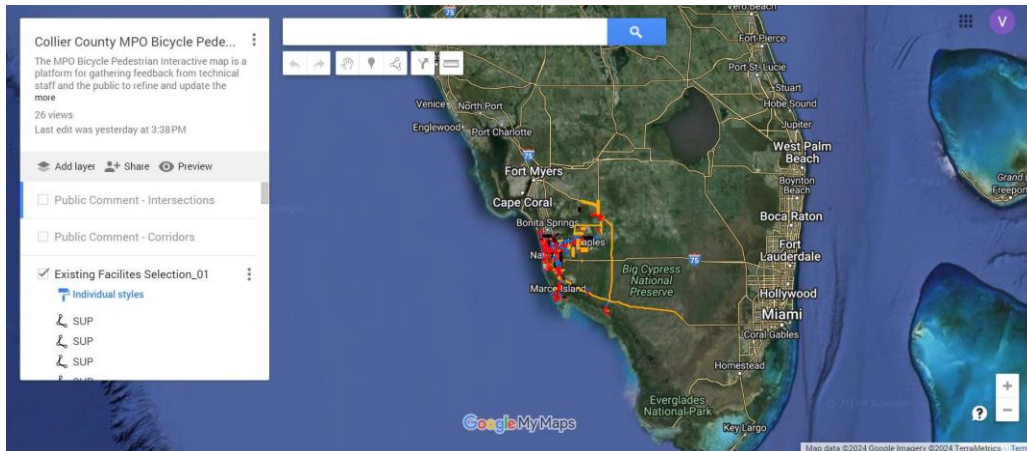
ADDING PUBLIC COMMENTS:

Adding Marker to Interactive Map:

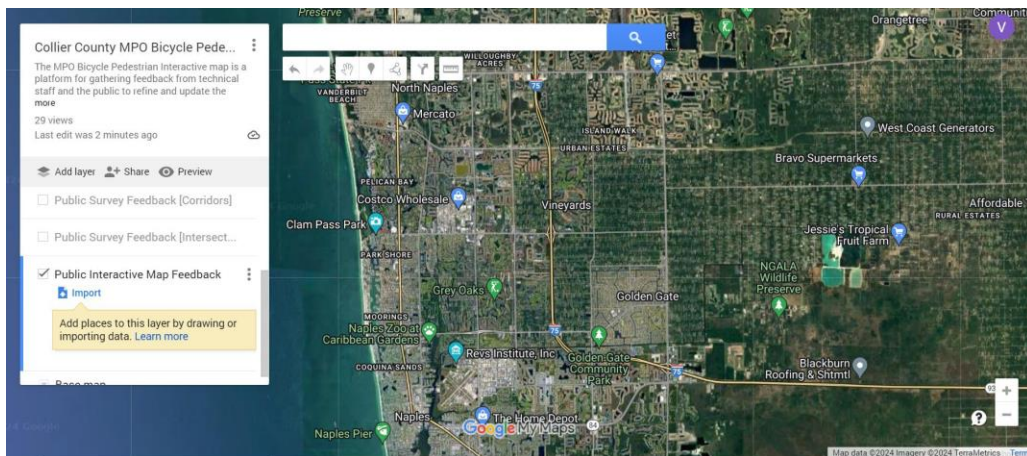
- To add a marker on the map, click on “Edit” on the left bar.



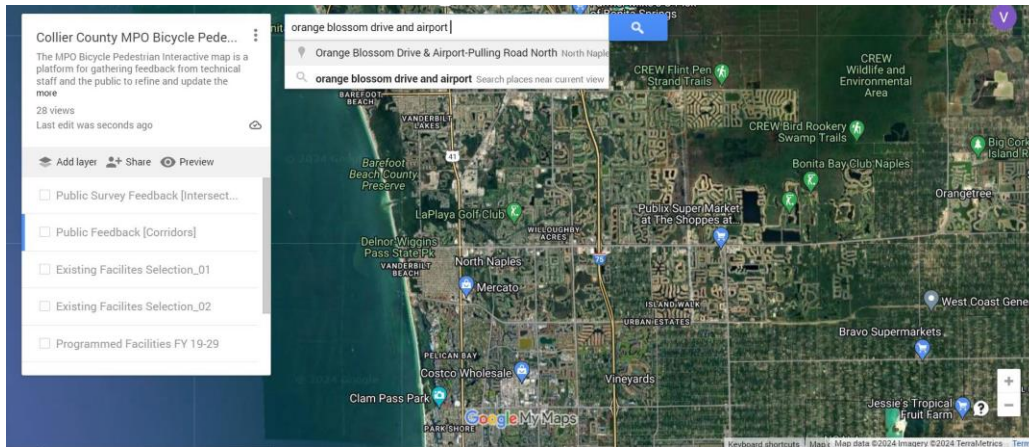
You will be redirected to a new page and see a map similar to the one seen on the next page.



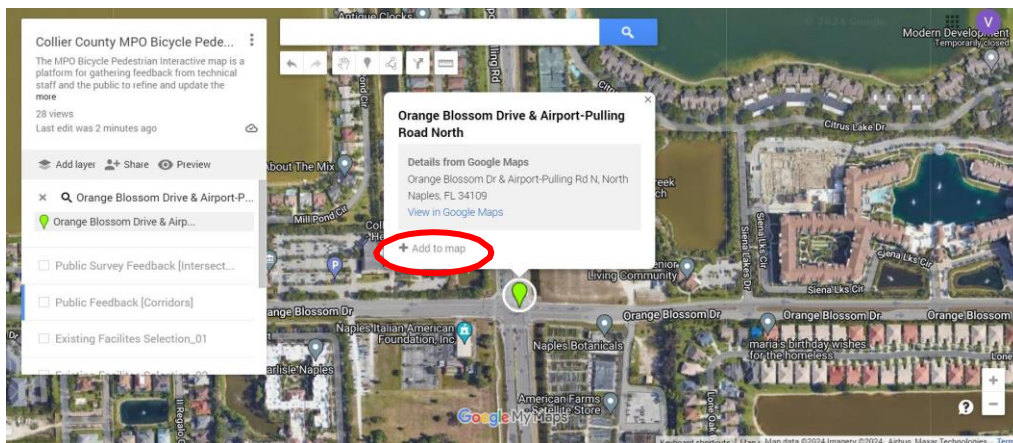
10. Turn off all layers except for “Public Interactive Map Feedback,” markers will be added to this layer specifically.



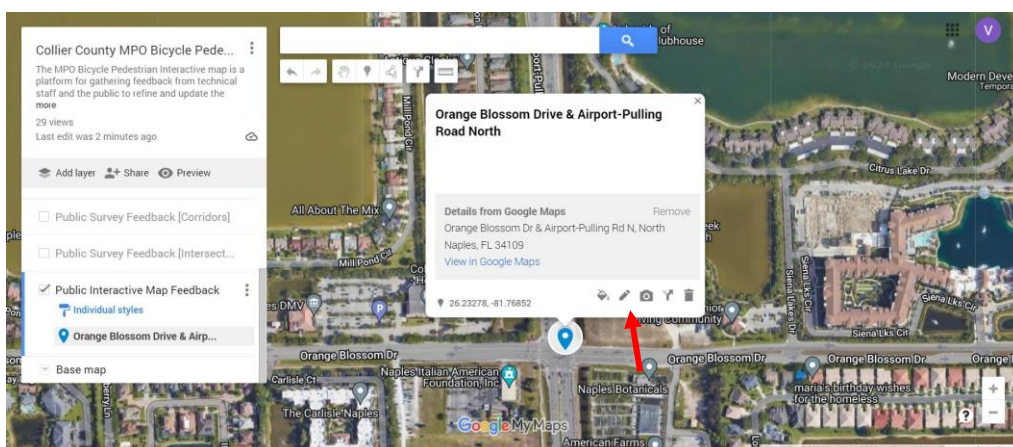
11. In the search at the top, look for areas of interest that you have comments on. (In this manual, for example the Intersection of Orange Blossom Dr and Airport-Pulling Rd N will be used). Information about the intersection will pop up.

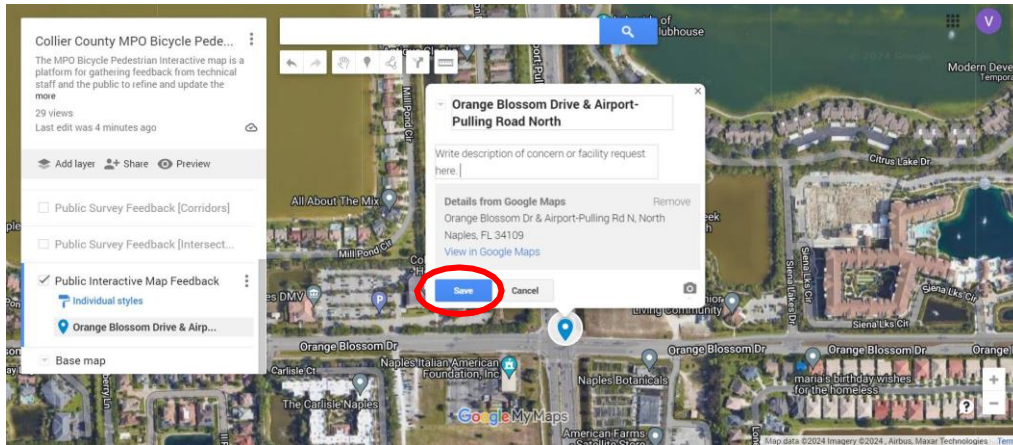


12. To add a marker, click on “Add to Map”

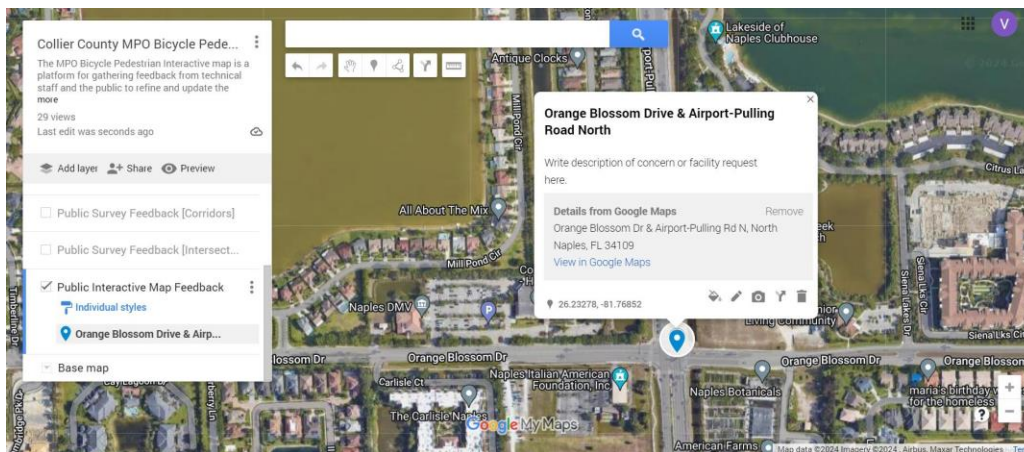


13. You will get a pop up as seen in the picture below. To edit and write a description or facility request, click on the pen icon.

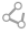


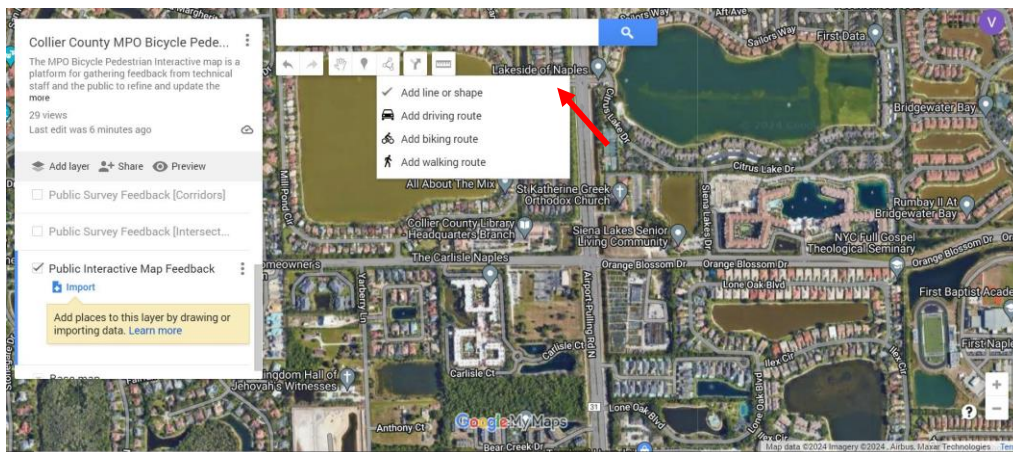
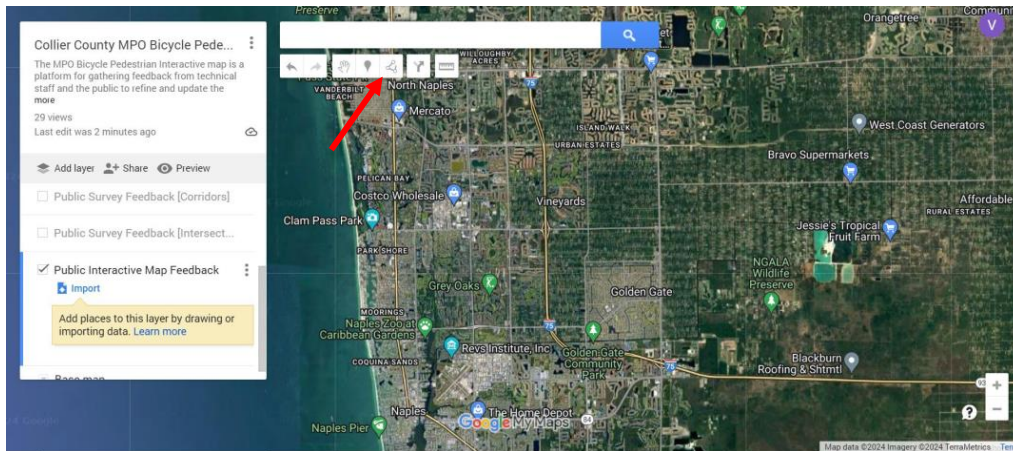


14. Hit the blue “Save” button. Your concern and/or facility request has been documented.



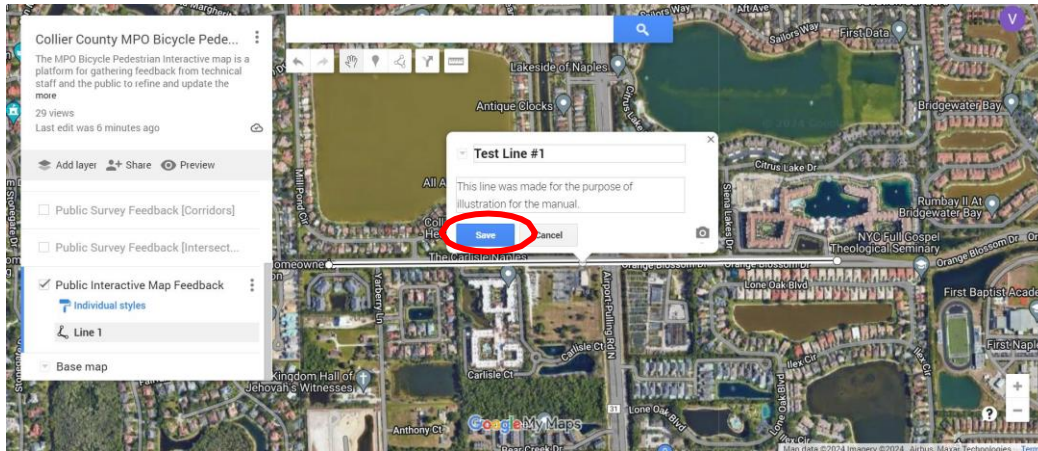
Adding a Polyline to Interactive Map:

15. Repeat Steps 6 to 8. Click on the  icon to draw a line to be given multiple options. (For the purpose of this manual, the Intersection of Orange Blossom Dr and Airport-Pulling Rd N will be used).



16. Click “Add line or shape”. Click on the map at one point to start and double-click a second point to draw the line. A pop up will show, title the new line the facility types and in the description, please include the following information:

- Name of the Major Road
- Extent Limits (From/To)



17. Hit the blue “Save” button. Your concern and/or facility request has been documented.

Note*: By clicking on paint bucket after hitting the “Save” button, the color and width of the line can be changed.

Standard Naming Convention

- **Red** = Sidewalk
- **Blue** = Bike Lane
- **Orange** = Paved Shoulder
- **Black** = Shared Used Pathway
- **Purple** = Sharrow

