



2050 Long Range Transportation Plan

Vision, Goals, and Evaluation Criteria

September 13, 2024



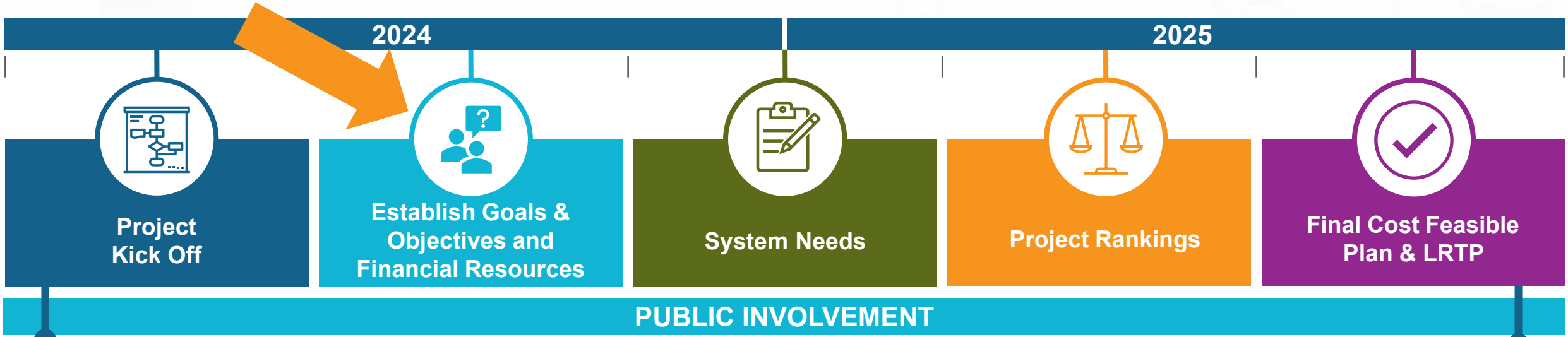
Agenda



- LRTP Schedule & Process
- State & Federal Planning Emphasis Areas
- LRTP Requirements
- LRTP Vision
- LRTP Goals
- Evaluation Framework
- Next Steps



LRTP Schedule & Process



Start
March 2024

Board
Adoption
December
2025



MPO Board & Committees



MPO Board & Committees



MPO Board, Committees, Lee MPO, Public, Cities, & Others



MPO Board, Committees, Lee MPO, Public, Cities, & Others



MPO Board, Committees, Public, Cities, & Others

2021 FTA and FHWA Planning Emphasis Areas



Transportation Resilience



Equity and Justice40



Meaningful Public Involvement



Infrastructure Connectivity



Complete Streets



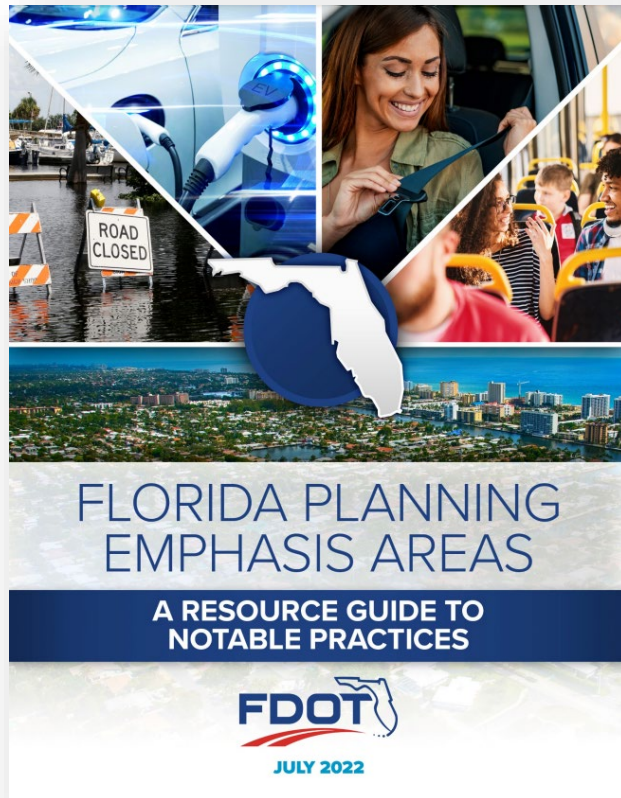
Data Sharing Principles



Planning and Environmental Linkages

Federal Transit Administration (FTA)
Federal Highway Administration (FHWA)

2022 FDOT Planning Emphasis Areas



Safety



Resilience



Equity

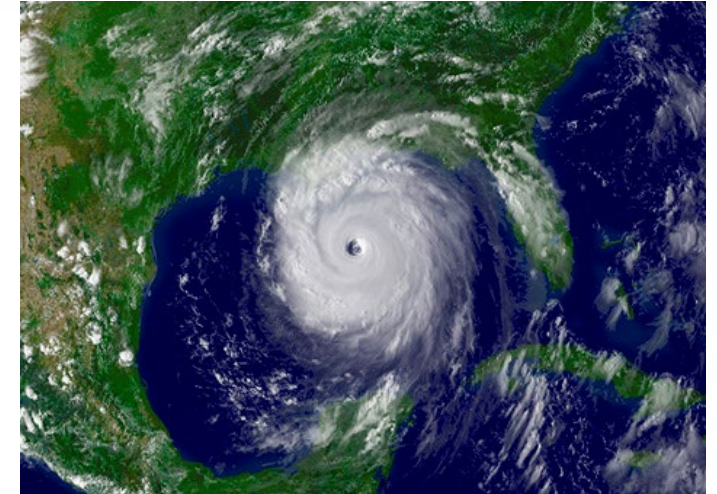
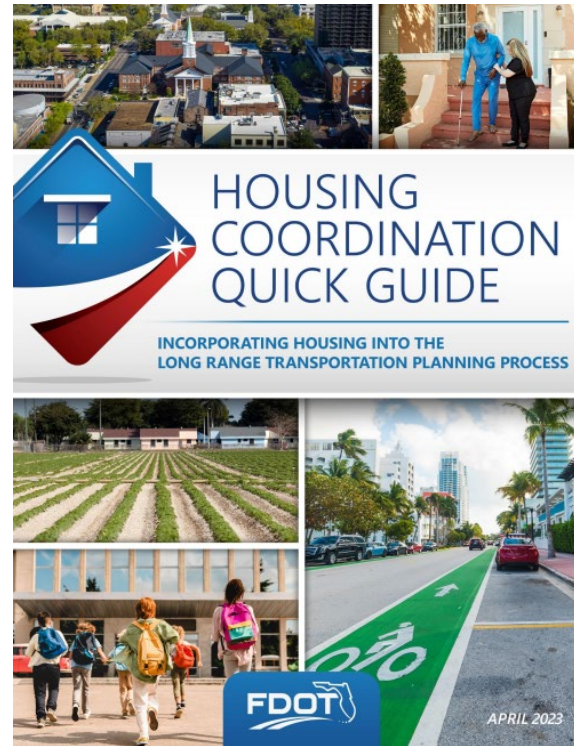


Emerging
Mobility

New Horizon Year - 2050

Planning Emphasis Areas for 2050

- New requirements from IIJA
 - Housing Integration
- New requirements from FDOT
 - Resilience to Extreme Weather



Source: NOAA



LRTP Legal Requirements

- Updated every 5 years with a 20-year planning horizon
- Continuous, cooperative, and comprehensive (3-C) planning process
- Reflects current and forecasted transportation/land use conditions (20 years)
- Performance measures and targets
- System Performance Report
- Financial Plan
- Congestion Management
- Environmental Mitigation
- Cost Feasible Plan (projects by Year of Expenditure)
- Meaningful public participation
- Collier MPO Board must adopt LRTP by December 11, 2025

LRTP Legal Requirements

Consider and implement projects, strategies, and services that address

Planning Factors

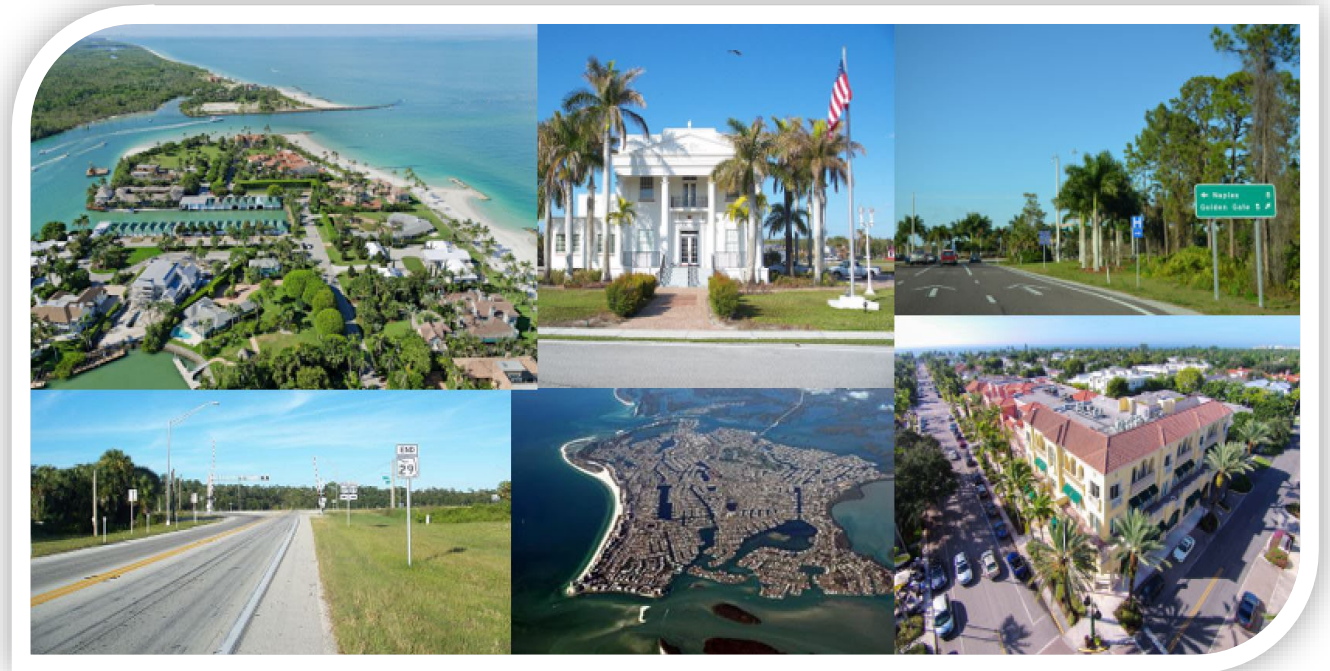
- 1 Economic Vitality
- 2 Safety
- 3 Security
- 4 Accessibility and Mobility
- 5 Environmental Quality
- 6 Multimodal Connectivity
- 7 System Efficiency
- 8 System Preservation
- 9 Resiliency & Reliability
- 10 Travel and Tourism

23 CFR 450.306(a) and (b)

2050 LRTP Vision

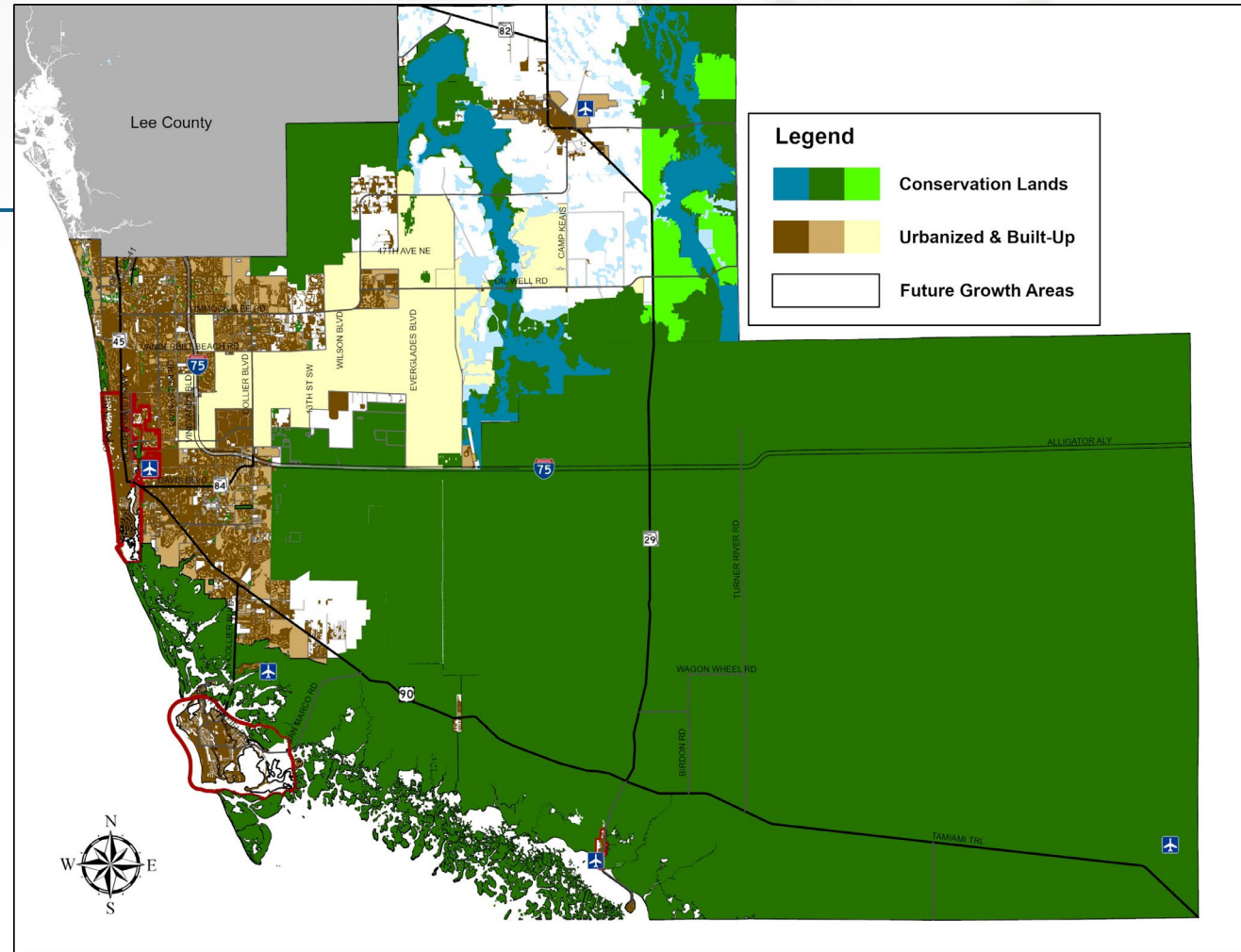
- Incorporated cities' characteristics:
 - More traditional
 - Interconnected grid pattern
 - Walkable residential neighborhoods
 - Lively mixed-use residential and commercial districts

- Unincorporated areas' (Golden Gate City, Immokalee, & Ave Maria) characteristics:
 - Less of a grid pattern
 - Longer travel distances
 - Supports walking and biking
 - Greater use of transit



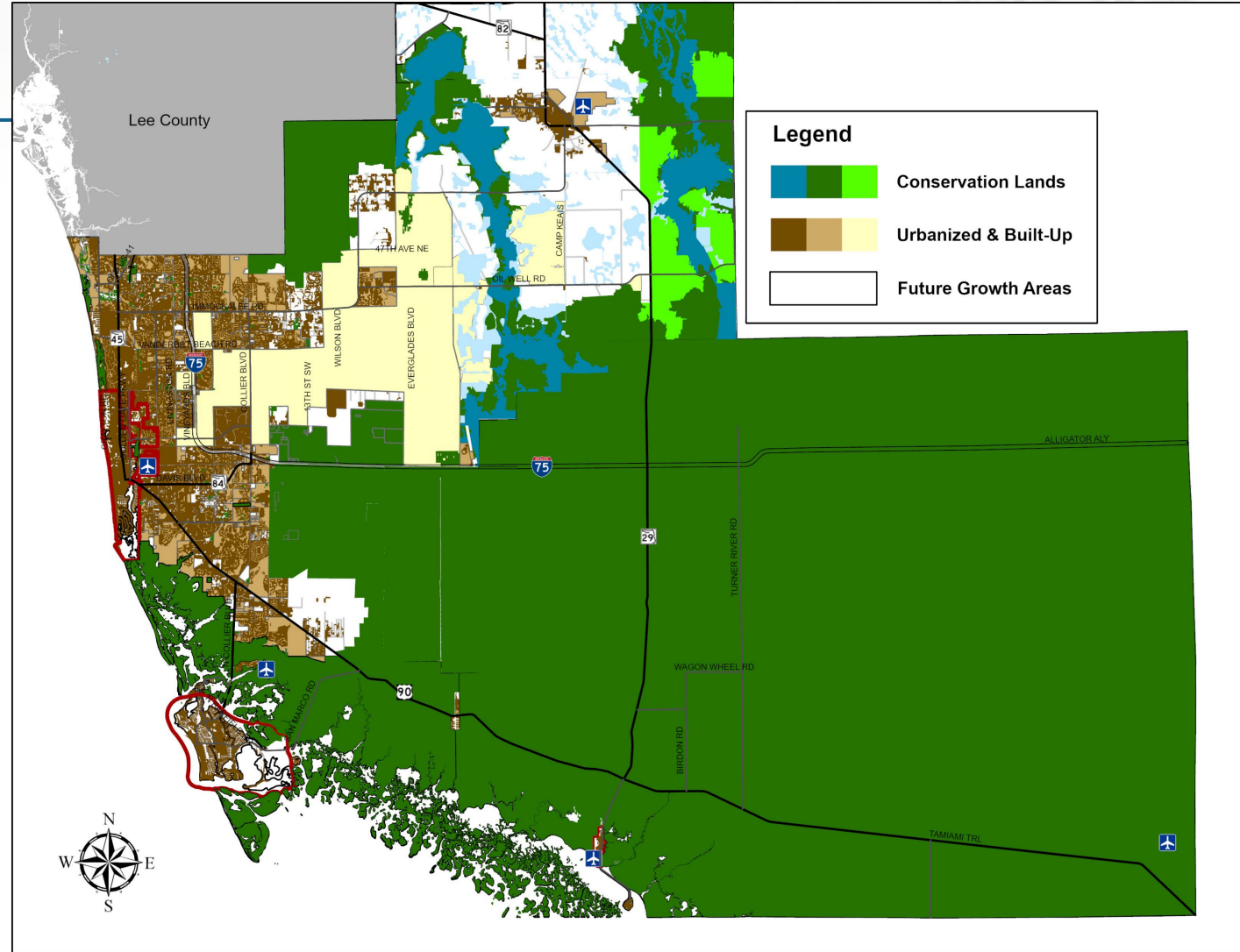
2050 LRTP Vision

- Urbanized land use (dark & light brown)
 - Mostly built out
 - High rise condominiums and hotels
 - Beaches
 - Commercial development along arterials
 - Large shopping centers clustered at intersections
 - Gated communities
 - Low to high residential density
- Urbanized land use (yellow)
 - Mostly built out
 - Primarily Golden Gate Estates
 - Canals
 - Very low residential density



2050 LRTP Vision

- Conservation lands (green, blue)
 - 67% of County lands dedicated to conservation
 - Creates a de facto urban growth boundary
 - Provides recreational opportunities
 - Sustains natural environment
- Future Growth Areas (white)
 - Majority of future growth planned
 - Subject to County’s Growth Management Plan regulations



2050 LRTP Vision

Vision is consistent with the 2045 LRTP Update with minor modifications to reflect Planning Emphasis Areas.

*“The Collier MPO 2050 Long Range Transportation Plan envisions the development of an integrated, **equitable**, multimodal transportation system to facilitate the safe and efficient movement of people and goods while addressing current and future transportation demand, environmental sustainability, **resilience**, and community character.”*



LRTP Goals



Goals 1-8 remain consistent with the 2045 LRTP

1. Ensure the Security of Transportation System for Users
2. Protect Environmental Resources
3. Improve System Continuity and Connectivity
4. Reduce Roadway Congestion
5. Promote Freight Movement
6. Increase the Safety of the Transportation System for Users
7. Promote Multi-modal Solutions
8. Promote the Integrated Planning of Transportation and Land Use

LRTP Goals (modified)



Goals 9-11 were modified to reflect newer requirements

Goal #9: Promote Sustainability in the Planning of Transportation and Land Use

9. Promote Sustainability *and Equity* in Transportation Planning and Land Use *for Disadvantaged Communities*

Goal #10: Consider Climate Change Vulnerability and Risk in Transportation Decision-Making

10. Consider *Agile, Resilient, and Quality Transportation Infrastructure* in Transportation Decision-Making

Goal #11: Consider Connected and Autonomous Vehicles (CAV) Technology in Future

11. Consider *Emerging Mobility and its Influential Role on the Multimodal Transportation System*

Evaluation Framework

1. Used to evaluate and compare how well potential projects meet the goals and objectives
2. Evaluates the advantages/disadvantages of projects in relation to each other
3. Shapes the recommendations for the projects in the Needs and Cost Feasible Plan
 - ✓ Each goal assigned a weighting factor – some goals have more weight, or importance than others
 - ✓ Evaluation Criteria are based on a point system for how well the project meets the Goal



Evaluation Framework

How well does a project meet a goal?

For Example: Goal 8 - Promote the Integrated Planning of Transportation and Land Use

- Weighted at **10%**
- Evaluation Criteria
 - Six criteria (8A-8F)
- Performance Measures
 - Improves integrated planning = **5**
 - Does not improve integrated planning = **0**

GOAL 8 SCORE = (Goal 8A + 8B + 8C + 8D + 8E + 8F) X 10%

- Goal 8A: Criteria = [5 or 0]
- Goal 8B: Criteria = [5 or 0]
- Goal 8C: Criteria = [5 or 0]
- Goal 8D: Criteria = [5 or 0]
- Goal 8E: Criteria = [5 or 0]
- Goal 8F: Criteria = [5 or 0]

Goal	Objectives	Evaluation Criteria	Performance Measures
8. Promote the Integrated Planning of Transportation and Land Use Total Weighting Factor: 10%	<ul style="list-style-type: none"> • Coordinate with local governments and partner agencies to assure transportation plans and programs support local land use plans and a sustainable transportation system • Assure that local growth management objectives are reflected in transportation plans and programs • Assure that transportation plans and projects promote economic sustainability for the County 	8A - Improves access to regional travel (for example, interstates, airports, ports, and SIS facilities)	Improves access = 5 Does not improve access = 0
		8B - Improves access to tourist destinations	Improves access = 5 Does not improve access = 0
		8C - Supports targeted redevelopments or CRAs (multimodal or vehicle improvements)	Yes = 5 No = 0
		8D - Identified in partner agency (city, transit, county, MPO, etc.) as a priority	Connections to other municipalities or counties? Yes = 5 No = 0
		8E - Improves vehicle or freight movement to an intermodal facility	Does the project improve vehicle or freight movement to intermodal facilities (for example, airport, bus transfer station, freight center, park-and-ride, etc.)? Yes = 5 No = 0
		8F - Reduces household cost by providing for connectivity between housing and transportation	Does this project improve capacity or direct access between major activity or employment centers and medium- and high-density housing development(s)?

Online Surveys

- Visioning and Needs Survey is live
 - Posted to social media
 - Distributed to Adviser Network and mailing lists
 - Helps inform the vision, goals, and objectives of the 2050 LRTP
 - Minimum 30 days prior to closing online survey

Scan to access survey:



Collier MPO 2050 Long Range Transportation
Plan Visioning and Needs Survey



1

What is your home zip code?

Enter your answer

2

How many miles do you travel on a typical day?

Select your answer



Activities – Next Quarter



- 2028 Existing + Committed Transportation Network
- FDOT D1 Districtwide Travel Model deficiencies (anticipate October 2024)
- Develop travel model alternatives to help inform needs and cost feasible projects





20 
 50

Thank you!

